

WINTER HARBOR HISTORICAL SOCIETY  
2020 CALENDAR





# EDUCATORS



**FLOSSIE HANCOCK**  
1891-1974

A member of Winter Harbor High School's first graduating class in 1913, Teacher for three generations of Winter Harbor children, Musician for dance bands, piano and violin teacher with a collection of over 100 clocks.



**MINNIE YOUNG MCLELLAN**  
1903-1998

Teacher for over 45 years in Maine and Massachusetts, Eastern Star past matron and member for 77 years.



**FLORENCE WILLEY CHASE**  
1908-1988

Teaching Principal, Co-owner of Chase's Restaurant, active in community.



**NINA T. FLIERL**  
1916-1977

Co-director and owner of Winter Harbor Reading School from 1957-74 on Grindstone Point, published in multiple professional journals regarding her work with learning disabilities

DECEMBER 2019  
S M T W T F S  
1 2 3 4 5 6 7  
8 9 10 11 12 13 14  
15 16 17 18 19 20 21  
22 23 24 25 26 27 28  
29 30 31

# JANUARY

FEBRUARY  
S M T W T F S  
1  
2 3 4 5 6 7 8  
9 10 11 12 13 14 15  
16 17 18 19 20 21 22  
23 24 25 26 27 28 29

Sunday	Monday	Tuesday	Wednesday	Thursday	Friday	Saturday
			1 New Year's Day	2	3	4
5	6 Epiphany	7	8	9	10	11
12	13	14	15	16	17	18
19	20 Martin Luther King Jr's Birthday	21	22	23	24	25
26	27	28	29	30	31	



# FISHING PARTNERS



**ELONA BUNKER TORREY**  
1902-1975

Sargent Street mother with a talent for knitting boiled wool socks, gloves and sweaters that became waterproof. Could can or preserve fish, vegetables or venison to supply the longest fishing trips.



**HELEN TORREY JOHNSON**  
1920-1985

Worked in father's and husband's lobster buying business and on Mark Island, Accomplished knitter, Veteran of World War II SPARS.





<div><div><div>JANUARY</div><div>S M T W T F S</div><div>1 2 3 4</div><div>5 6 7 8 9 10 11</div><div>12 13 14 15 16 17 18</div><div>19 20 21 22 23 24 25</div><div>26 27 28 29 30 31</div></div><div>FEBRUARY</div><div><div>MARCH</div><div>S M T W T F S</div><div>1 2 3 4 5 6 7</div><div>8 9 10 11 12 13 14</div><div>15 16 17 18 19 20 21</div><div>22 23 24 25 26 27 28</div><div>29 30 31</div></div></div>						
Sunday	Monday	Tuesday	Wednesday	Thursday	Friday	Saturday
						1
2 Groundhog Day	3	4	5	6	7	8
9	10	11	12 Lincoln's Birthday	13	14 Valentine's Day	15
16	17 President's Day	18	19	20	21	22
23	24	25 Mardi Gras	26 Ash Wednesday	27	28	29 Washington's Birthday



# MERCHANTS



**CARRIE JOY BICKFORD**

1873-1952

Store originally had a large barn and slaughter house. Later sold dry goods and some groceries.



**GRACE STEVENS HANSON**

1869-1953

Sailed with her father on the maiden voyage of the lumber schooner; Grace C. Stevens, Ran a fine ladies' clothing store, featuring hats with fine feathers for the Grindstone Point residents, Choir director and organist for the Baptist Church.



**ANNIE MAUDE MCKAY GERRISH**

1882-1970

Co-owner and operator of Gerrish's Drug Store for over 65 years, Life member of Eastern Star, Rebekahs, Grange and Acadia Women's Club



**MARIE GERRISH CLARK**

1910-2000

Legendary soul of Winter Harbor, taught school for two years, before returning to manage Gerrish's Store from 1935-1992. She was the information resource and historian for visitors and residents.





FEBRUARY  
S M T W T F S  
1  
2 3 4 5 6 7 8  
9 10 11 12 13 14 15  
16 17 18 19 20 21 22  
23 24 25 26 27 28 29

# MARCH

APRIL  
S M T W T F S  
1 2 3 4  
5 6 7 8 9 10 11  
12 13 14 15 16 17 18  
19 20 21 22 23 24 25  
26 27 28 29 30

Sunday	Monday	Tuesday	Wednesday	Thursday	Friday	Saturday
1	2	3	4	5	6	7
8	9	10	11	12	13	14
15	16	17	18	19	20	21
22	23	24 St. Patrick's Day	25	26	27 First Day of Spring	28
29	30	31				

# HEALTH CARE

*Hoorthy Elizabeth Lindsey  
(ag 2nd Nov 2002)  
Hot water in four hours  
If baby cries too much give 1 part milk  
and parts water.  
Put to breast 8 hours after birth - then every  
4 hours until milk comes let nurse  
every 2 hours in the day time and every  
4 hours at night.*

## MINERVA HOLT PRESCRIPTION



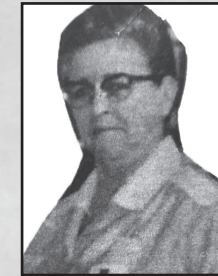
MINERVA RICHARDS HOLT, RN  
1869-1951

Attended many Winter Harbor births and support for her physician husband.



DR. ALMENA GUPTILL BAKER FLINT  
1842-1924

Graduated from Boston University School of Medicine with honors in 1876, while running a boarding home for medical students, became major landowner in her native Winter Harbor and sponsor of its first public library.



MARTHA YOUNG  
1898-1984

Active in American Red Cross in World War II and employed in Connecticut veterans' hospital, teacher, dance band pianist, life member of Eastern Star.



APRIL

MARCH  
S M T W T F S  
1 2 3 4 5 6 7  
8 9 10 11 12 13 14  
15 16 17 18 19 20 21  
22 23 24 25 26 27 28  
29 30 31

MAY  
S M T W T F S  
1 2  
3 4 5 6 7 8 9  
10 11 12 13 14 15 16  
17 18 19 20 21 22 23  
24 25 26 27 28 29 30  
31

Sunday	Monday	Tuesday	Wednesday	Thursday	Friday	Saturday
			1  April Fool's Day	2	3	4
5  Palm Sunday	6	7	8	9  Maundy Thursday	10  Good Friday	11  Holy Saturday
12  Easter	13	14	15	16	17	18
19	20	21	22	23	24	25
26	27	28	29	30		

# LIBRARY



**ETHEL HAMMOND YOUNG**  
1874-1976

Bookkeeper, founder of local Eastern Star and Cemetery Association, employed at area hotels and with Grindstone Point families, loved parrots and cats. Winter Harbor's first librarian, when the library initially received town funds in 1920.





<div><div><div>APRIL</div><div>S M T W T F S</div><div>1 2 3 4</div><div>5 6 7 8 9 10 11</div><div>12 13 14 15 16 17 18</div><div>19 20 21 22 23 24 25</div><div>26 27 28 29 30</div></div><div>MAY</div><div><div>JUNE</div><div>S M T W T F S</div><div>1 2 3 4 5 6</div><div>7 8 9 10 11 12 13</div><div>14 15 16 17 18 19 20</div><div>21 22 23 24 25 26 27</div><div>28 29 30</div></div></div>						
Sunday	Monday	Tuesday	Wednesday	Thursday	Friday	Saturday
					1	2
3	4	5	6	7	8	9
10	11	Cinco De Mayo	13	National Day of Prayer	15	16
Mother's Day		12	13	14	15	16
17	18	19	20	21	22	23
24	25	26	27	Ascension Day	28	29
	Memorial Day				29	30
31						
Pentecost						



# LODGING AND MEALS



MARGARET WATERHOUSE LOVEJOY  
1920-2002

Devoted cook and server at Chase's Restaurant; training multiple owners, sharing her wit and humor



CONNIE BICKFORD MACKAY  
1919-2003

Winter Harbor librarian and manager of Harbor Hill; a Grindstone Point inn, active in Parent Teacher Organization, founding board member for Eleanor Widener Dixon Clinic



CORA MADELINE PENDLETON  
1910-1996

Chef in Boston and for the Winter Harbor Yacht Club, Innkeeper for family business; Serene Cottage



LAURA ROBINSON BICKFORD  
1889-1956

FREDA BICKFORD SMART  
1920-1996

Laura and her daughter, Freda founded Winter Harbor's first family restaurant: Hamburger Hill in 1947





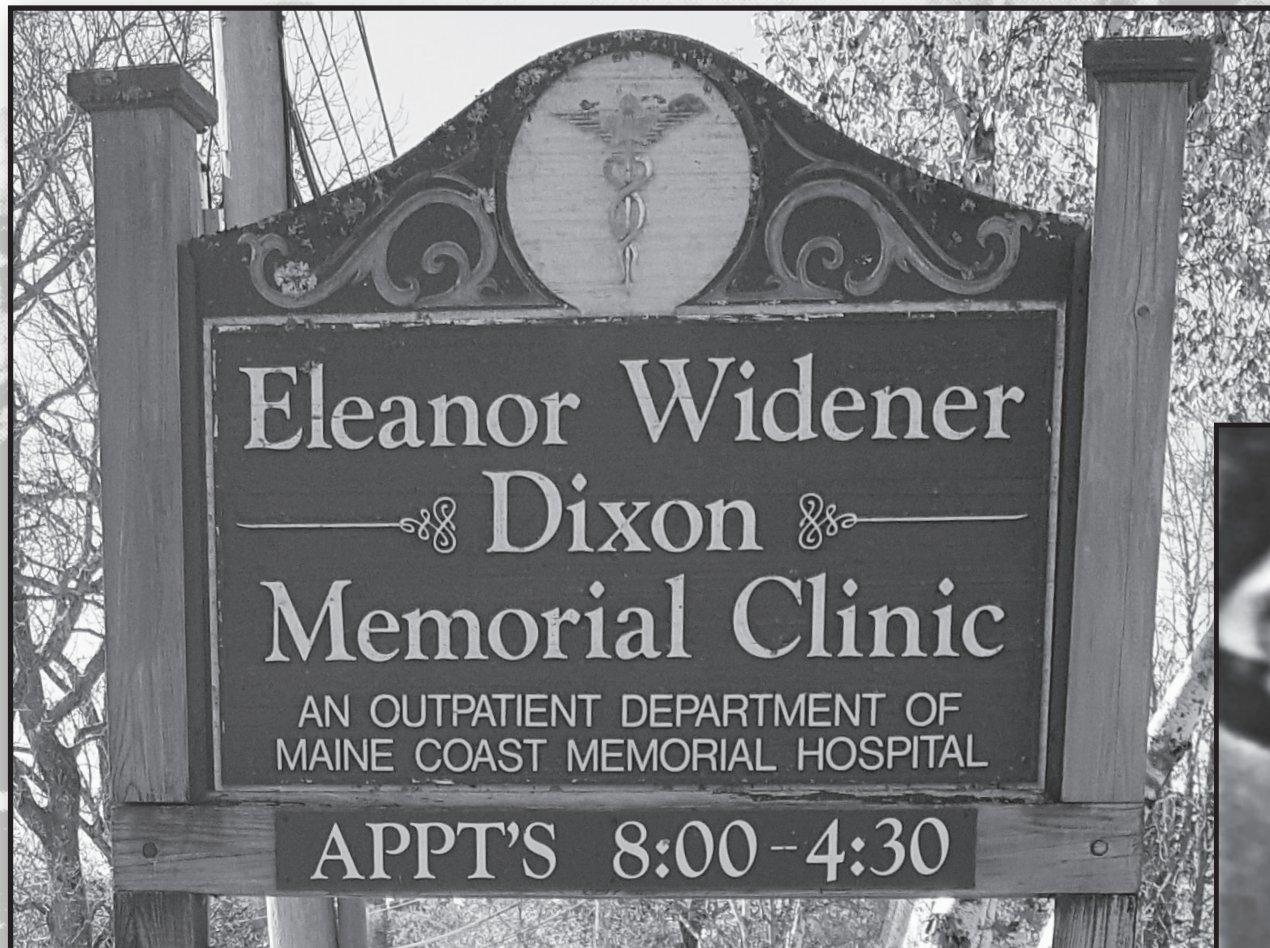
MAY  
S M T W T F S  
1 2  
3 4 5 6 7 8 9  
10 11 12 13 14 15 16  
17 18 19 20 21 22 23  
24 25 26 27 28 29 30  
31

# JUNE

JULY  
S M T W T F S  
1 2 3 4  
5 6 7 8 9 10 11  
12 13 14 15 16 17 18  
19 20 21 22 23 24 25  
26 27 28 29 30 31

Sunday	Monday	Tuesday	Wednesday	Thursday	Friday	Saturday
	1	2	3	4	5	6
7	8	9	10	11	12	13
14	15	16	17	18	19	20
21	22	23	24	25	26	27 First Day of Summer
Father's Day	29	30				
28						

# PHILANTHROPIST



ELEANOR WIDENER DIXON  
1891-1966

Founding mother of Grindstone Point, becoming a benefactor for the community and its residents. Mrs. Dixon provided the endowment for the Widener Library at Harvard University and donated her yacht to the World War II effort. Mrs. Dixon's tradition for giving and aiding local causes began the Dixon legacy in our community.



<div><div><div>JUNE</div><div>S M T W T F S</div><div>1 2 3 4 5 6</div><div>7 8 9 10 11 12 13</div><div>14 15 16 17 18 19 20</div><div>21 22 23 24 25 26 27</div><div>28 29 30</div></div><div>JULY</div><div><div>AUGUST</div><div>S M T W T F S</div><div>1</div><div>2 3 4 5 6 7 8</div><div>9 10 11 12 13 14 15</div><div>16 17 18 19 20 21 22</div><div>23 24 25 26 27 28 29</div><div>30 31</div></div></div>						
Sunday	Monday	Tuesday	Wednesday	Thursday	Friday	Saturday
			1	2	3	4
						Independence Day
5	6	7	8	9	10	11
12	13	14	15	16	17	18
19	20	21	22	23	24	25
26	27	28	29	30	31	





# SUMMERING PLACE

LADIES ON LEDGES  
Little Moose Island



PICNIC LADIES AT RAND FARM  
Josie Rand, Alice Waldron, Lillian  
Torrey Harrington



CYCLE CLUB

Ann Joy, Jessie Small, Blanche  
Pendleton, Ethel Young, Zoe Rand,  
Mary Workman, Etta Grover, Cora  
Watson, Hannah Crabtree





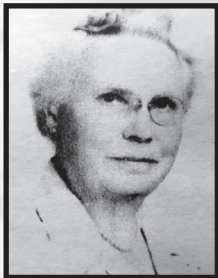
<div><div><div>JULY</div><div>S M T W T F S</div><div>1 2 3 4</div><div>5 6 7 8 9 10 11</div><div>12 13 14 15 16 17 18</div><div>19 20 21 22 23 24 25</div><div>26 27 28 29 30 31</div></div><div>AUGUST</div><div><div>SEPTEMBER</div><div>S M T W T F S</div><div>1 2 3 4 5</div><div>6 7 8 9 10 11 12</div><div>13 14 15 16 17 18 19</div><div>20 21 22 23 24 25 26</div><div>27 28 29 30</div></div></div>						
Sunday	Monday	Tuesday	Wednesday	Thursday	Friday	Saturday
						1
2	3	4	5	6	7	8
9	10	11	12	13	14	15
16	17	18	19	20	21	22
23	24	25	26	27	28	29
30	31					





BERNICE "BUNNY" RICHMOND BURLEIGH  
1899-1983

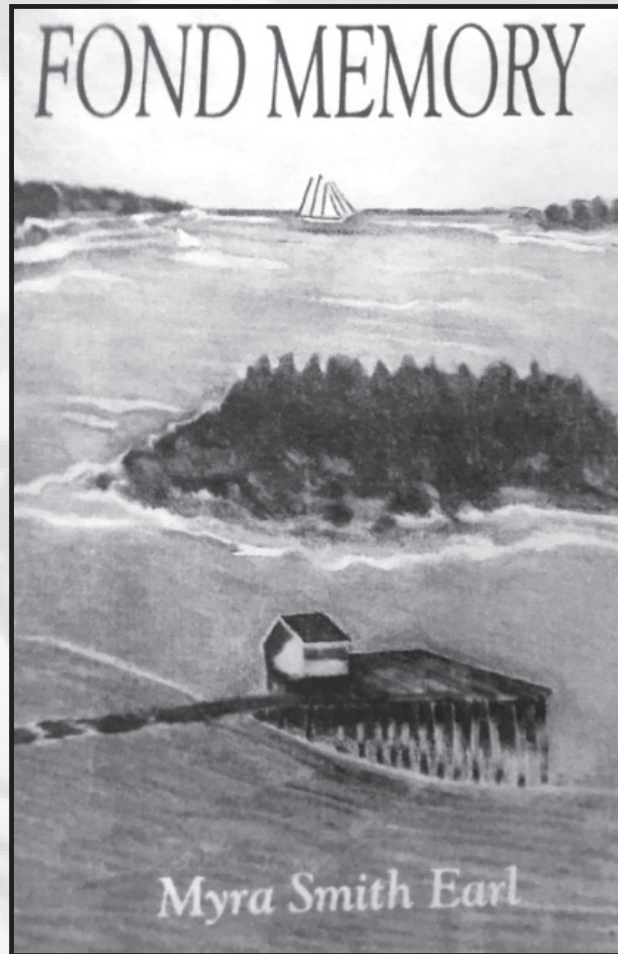
From Broadway to Mark Island Lighthouse,  
Author of 'Right as Rain,' 'Winter Harbor,'  
and 'Our Island Lighthouse,' publisher of  
'Peninsula Gazette' newspaper



MYRA SMITH EARL  
1879-1972

Author of memoir: 'Fond Memory,' describing  
19th century life for Pendleton and Guphill  
families, Worked in Winter Harbor's first store  
on Harbor Road

## ARTISTS AND WRITERS



EVA WESCOTT HARRINGTON  
1892-1974

Portrait by Sandra James Browne, Active in  
Eastern Star, Baptist Church, Rebecca's and  
Acadia Women's Club



SANDRA JAMES BROWNE  
1937-2007

Artist of seascapes and portraits of local  
residents, Elected to American Water Color  
Society and the Allied Artists of America., co-  
owner of The Art Gallery for over 60 years.  
Background by Sandra

SCHOODIE POINT  
WINTER HARBOR, MAINE



AUGUST  
S M T W T F S  
1  
2 3 4 5 6 7 8  
9 10 11 12 13 14 15  
16 17 18 19 20 21 22  
23 24 25 26 27 28 29  
30 31

# SEPTEMBER

OCTOBER  
S M T W T F S  
1 2 3  
4 5 6 7 8 9 10  
11 12 13 14 15 16 17  
18 19 20 21 22 23 24  
25 26 27 28 29 30 31

Sunday	Monday	Tuesday	Wednesday	Thursday	Friday	Saturday
		1	2	3	4	5
6	7 Labor Day	8	9	10	11 Patriot Day	12
13	14	15	16	17	18	19
20	21	22 First Day of Autumn	23	24	25	26
27	28	29	30			

# WORKFORCE



MARILYN BUCKLEY COOMBS  
1924-2004

Manager of the Liberty National Bank for over 20 years, manager of Winter Harbor Housing Development Corporation, Winter Harbor Town Clerk, Librarian, School Board and bookkeeper for Winter Harbor Food Service, Chamber of Commerce member.



GERTRUDE HAYCOCK HARRINGTON  
1926-2004

Worked at Stinson Canning and retired from post office after 26 years, Operator/dispatcher for Winter Harbor Fire Department.



MILDRED STROUT MERCHANT BARTON  
1926-2009

Worked for post office and bank for decades, accomplished artist with natural collections from forest and seashore.

SEPTEMBER  
S M T W T F S  
1 2 3 4 5  
6 7 8 9 10 11 12  
13 14 15 16 17 18 19  
20 21 22 23 24 25 26  
27 28 29 30

# OCTOBER

NOVEMBER  
S M T W T F S  
1 2 3 4 5 6 7  
8 9 10 11 12 13 14  
15 16 17 18 19 20 21  
22 23 24 25 26 27 28  
29 30

Sunday	Monday	Tuesday	Wednesday	Thursday	Friday	Saturday
				1	2	3
4	5	6	7	8	9	10
11	12 Columbus Day	13	14	15	16	17
18	19	20	21	22	23	24
25	26	27	28	29	30	31 Halloween



# CIVIC LEADERS



**ALTHEA COOMBS RAY**  
1932-2008

One of the founders of Mount Desert Island Sheltered Workshop, Carried the traditions of community spirit; soliciting food for town meeting dinners, collecting for floral arrangements, modeled a joy of outdoors by walking, snowmobiling and swimming.



**EDWINA SARGENT JOY**  
1914-2000

Always a smile and a helping hand, Active in Navy Wives Club, welcoming countless new families to Winter Harbor, town chair for polio fundraising and active in Baptist Church Sewing Circle.



**NELL MERCHANT BYERS**  
1929-2013

Worked on Grindstone Point for decades, cook for local fundraisers, made wreathes and maintained local cemeteries, Active in fire department; maintaining communication among fire fighters.



**SYLVIA SARGENT PERRY**  
1906-1988

Winter Harbor Baptist Church guardian; taught Sunday School and sang in choir, tireless fundraising through Baptist Sewing Circle, chair of town meeting dinners, seamstress and surrogate mother for Navy sailors.

**MARGARET CHAMPION  
FAULKINGHAM**  
1925-2005

Post Master for 28 years, School board member, secretary of Salvation Army, volunteer for American Heart Association and American Lung Association, Winter Harbor Parent Teacher Organization and Acadian Women's Club.



OCTOBER  
S M T W T F S  
1 2 3  
4 5 6 7 8 9 10  
11 12 13 14 15 16 17  
18 19 20 21 22 23 24  
25 26 27 28 29 30 31

# NOVEMBER

DECEMBER  
S M T W T F S  
1 2 3 4 5  
6 7 8 9 10 11 12  
13 14 15 16 17 18 19  
20 21 22 23 24 25 26  
27 28 29 30 31

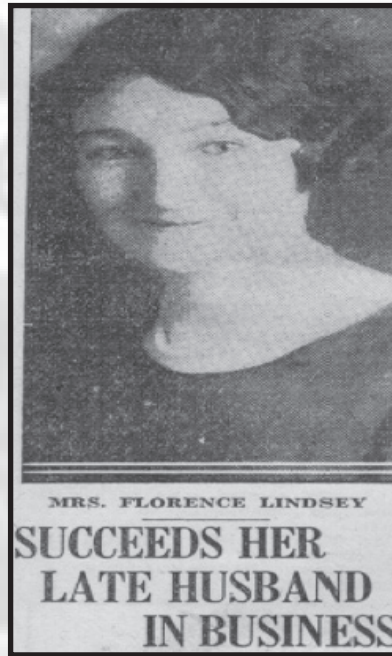
Sunday	Monday	Tuesday	Wednesday	Thursday	Friday	Saturday
1  All Saints Day Daylight Savings Time Ends	2	3  Election Day	4	5	6	7
8	9	10	11  Veteran's Day	12	13	14
15	16	17	18	19	20	21
22	23	24	25	26  Thanksgiving Day	27	28
29  First Sunday of Advent	30					

# BUSINESS LEGACIES



**ABBIE BICKFORD WHITTEN**  
1877-1949

Owner-operator of Whitten's Laundry; expanded from Meadow Lane to Main Street, employed over 30 people, included fleet of trucks for delivery.



**FLORENCE NASH LINDSEY**  
1900-1989

Became one of Maine's first female embalmers and funeral directors, worked as a teacher for many years



**RUBIE J. TRACY TRACY**  
1868-1945

Assisted in her husband's law practice and businesses and assumed responsibility for his holdings in 1912, became agent for multiple insurance companies, founder of Winter Harbor Agency.



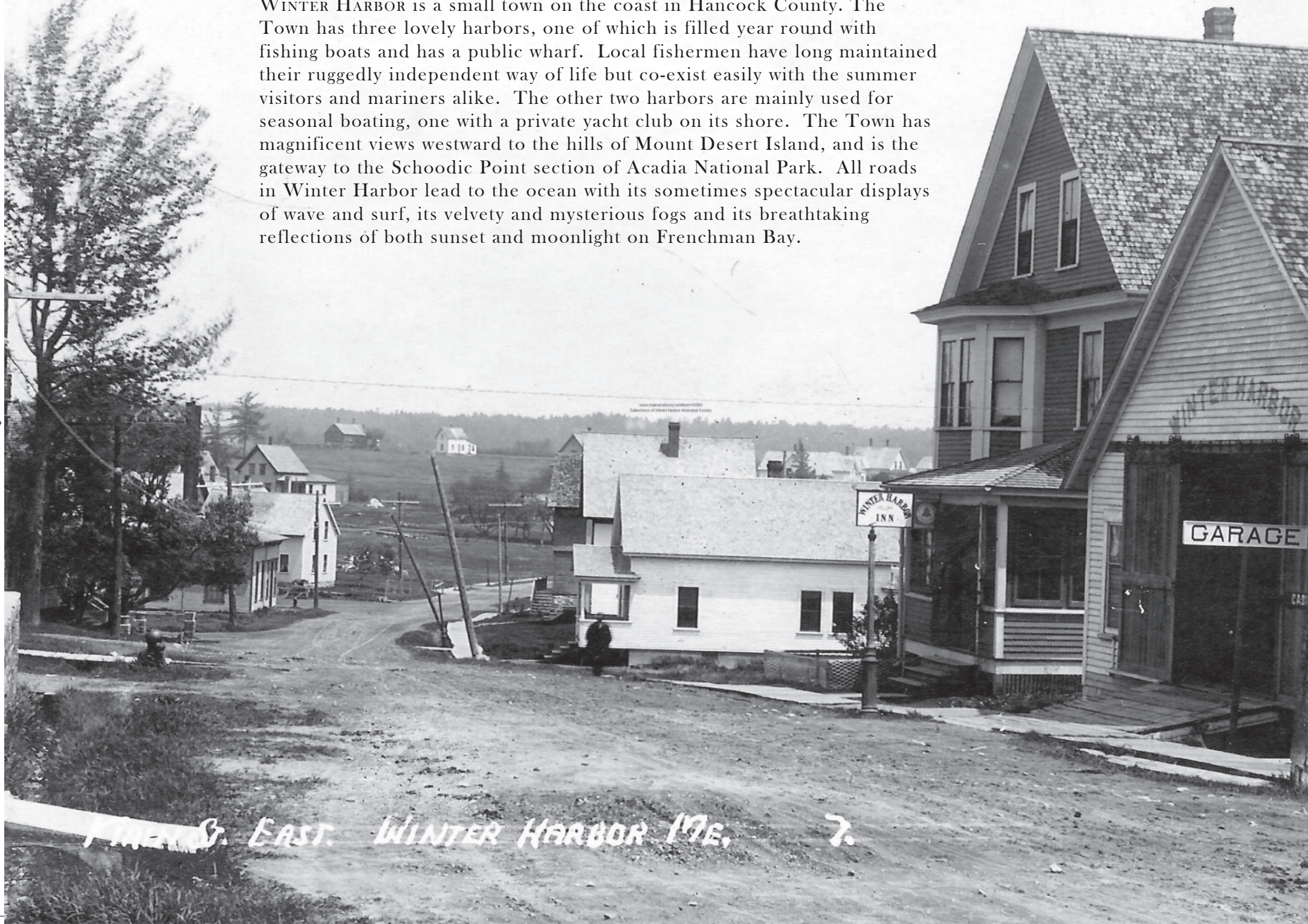
NOVEMBER  
S M T W T F S  
1 2 3 4 5 6 7  
8 9 10 11 12 13 14  
15 16 17 18 19 20 21  
22 23 24 25 26 27 28  
29 30

# DECEMBER

JANUARY 2021  
S M T W T F S  
1 2  
3 4 5 6 7 8 9  
10 11 12 13 14 15 16  
17 18 19 20 21 22 23  
24 25 26 27 28 29 30  
31

Sunday	Monday	Tuesday	Wednesday	Thursday	Friday	Saturday
		1	2	3	4	5
6	7 Pearl Harbor Remembrance Day	8	9	10	11	12
13	14	15	16	17	18	19
20	21 First Day of Winter	22	23	24 Christmas Eve	25 Christmas	26
27	28	29	30	31 New Year's Eve		

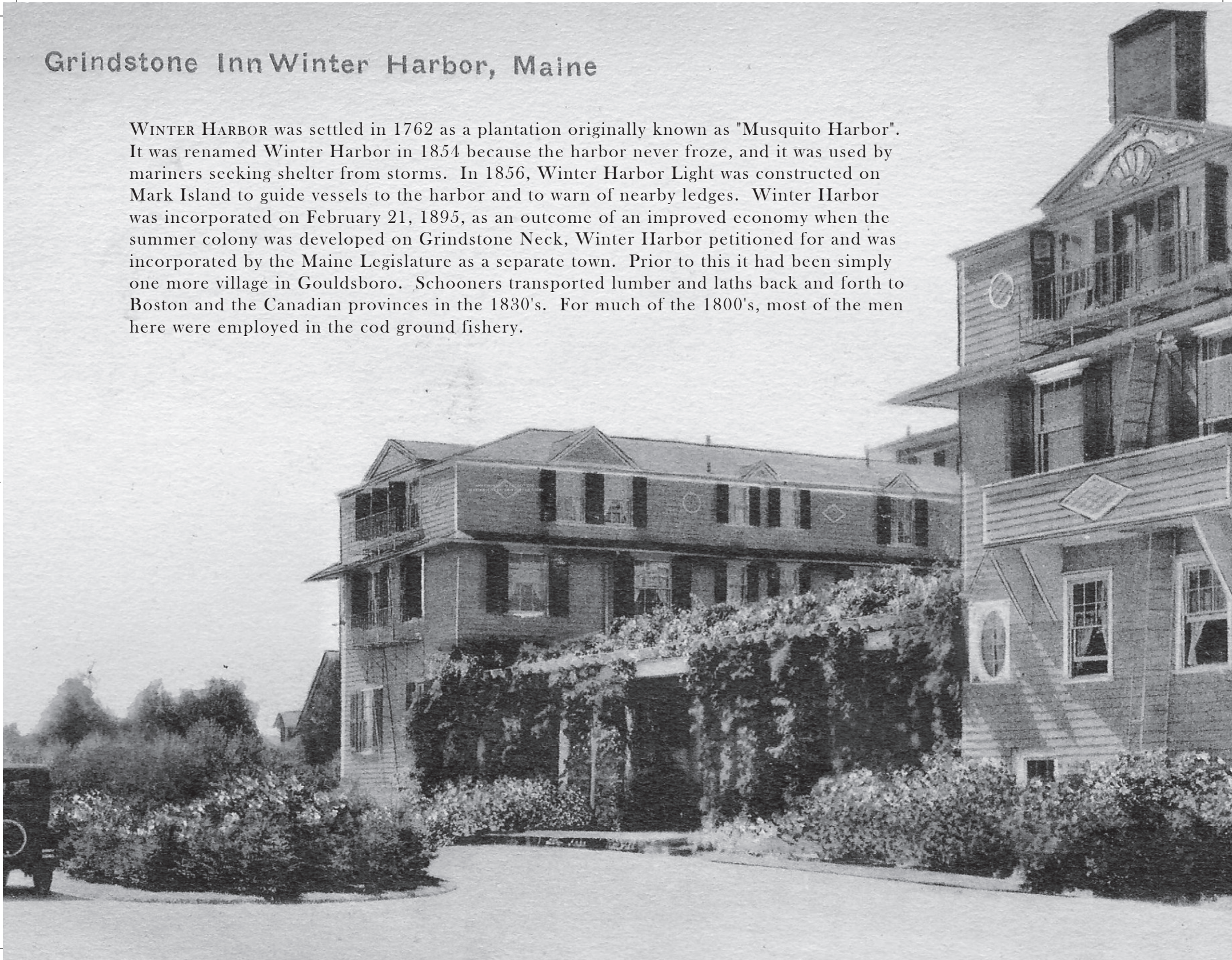
WINTER HARBOR is a small town on the coast in Hancock County. The Town has three lovely harbors, one of which is filled year round with fishing boats and has a public wharf. Local fishermen have long maintained their ruggedly independent way of life but co-exist easily with the summer visitors and mariners alike. The other two harbors are mainly used for seasonal boating, one with a private yacht club on its shore. The Town has magnificent views westward to the hills of Mount Desert Island, and is the gateway to the Schoodic Point section of Acadia National Park. All roads in Winter Harbor lead to the ocean with its sometimes spectacular displays of wave and surf, its velvety and mysterious fogs and its breathtaking reflections of both sunset and moonlight on Frenchman Bay.





## Grindstone Inn Winter Harbor, Maine

WINTER HARBOR was settled in 1762 as a plantation originally known as "Musquito Harbor". It was renamed Winter Harbor in 1854 because the harbor never froze, and it was used by mariners seeking shelter from storms. In 1856, Winter Harbor Light was constructed on Mark Island to guide vessels to the harbor and to warn of nearby ledges. Winter Harbor was incorporated on February 21, 1895, as an outcome of an improved economy when the summer colony was developed on Grindstone Neck, Winter Harbor petitioned for and was incorporated by the Maine Legislature as a separate town. Prior to this it had been simply one more village in Gouldsboro. Schooners transported lumber and laths back and forth to Boston and the Canadian provinces in the 1830's. For much of the 1800's, most of the men here were employed in the cod ground fishery.





DEDICATED TO THE STRONG  
WOMEN OF OUR PAST

19th United States Constitutional Amendment  
1920-2020

Winter Harbor  
and  
WINTER HARBOR'S INCORPORATION  
1895-2020

The photos in this calendar are just a small sample of the women, who  
worked tirelessly for their community.

Please contact the Winter Harbor Historical Society for more information.

**WINTER HARBOR**  
**HISTORICAL**  
**SOCIETY**